

# Venue Keyboard Folio

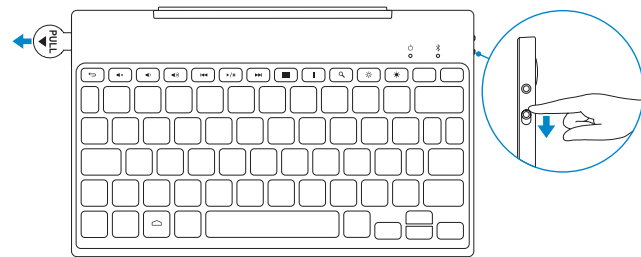
## Quick Start Guide

Guide d'information rapide



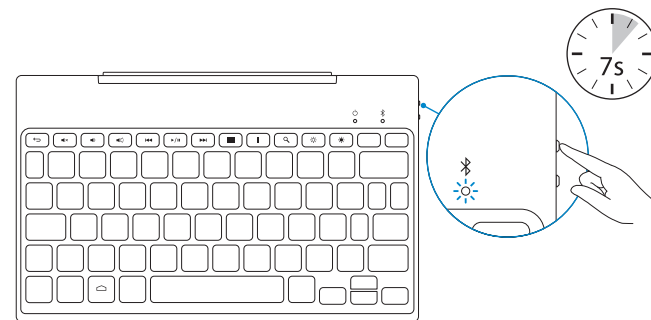
### 1 Pull out the insulation strip and slide the power switch

Retirez la bande isolante puis faites glisser l'interrupteur d'alimentation



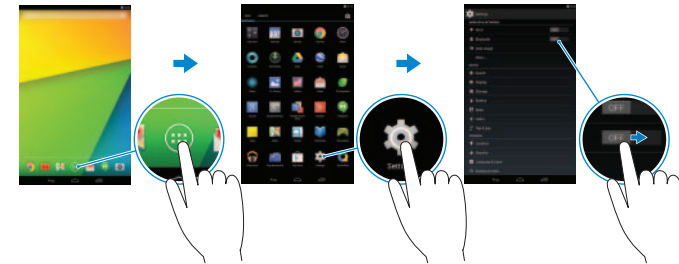
### 2 Press the Bluetooth button for 7 seconds to enable pairing mode

Appuyez sur le bouton Bluetooth pendant 7 secondes pour activer le mode d'appariement



### 3 Pair the keyboard with your tablet

Appariez le clavier avec la tablette



1. On your tablet, tap **All Apps** → **Settings** → **WIRELESS & NETWORKS** → **Bluetooth**.
2. Enable Bluetooth by moving the slider to **ON** position.
3. Tap **Bluetooth**.
4. In the list of devices, tap **Dell Venue Keyboard**.
5. Follow the instructions on the screen.

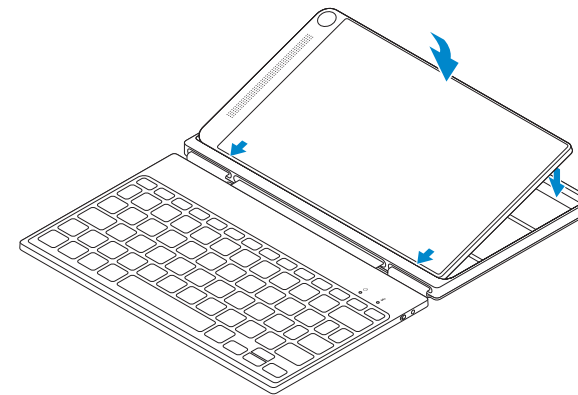
1. Sur la tablette, touchez **Toutes les applications** → **Paramètres** → **SANS FIL ET RÉSEAUX** → **Bluetooth**.
2. Activez le Bluetooth en basculant le bouton sur la position **OUI**.
3. Touchez **Bluetooth**.
4. Dans la liste des périphériques, touchez **Dell Venue Keyboard**.
5. Conformez-vous aux instructions qui s'affichent.

### 4 Insert the tablet in the folio

Insérez la tablette dans l'étui

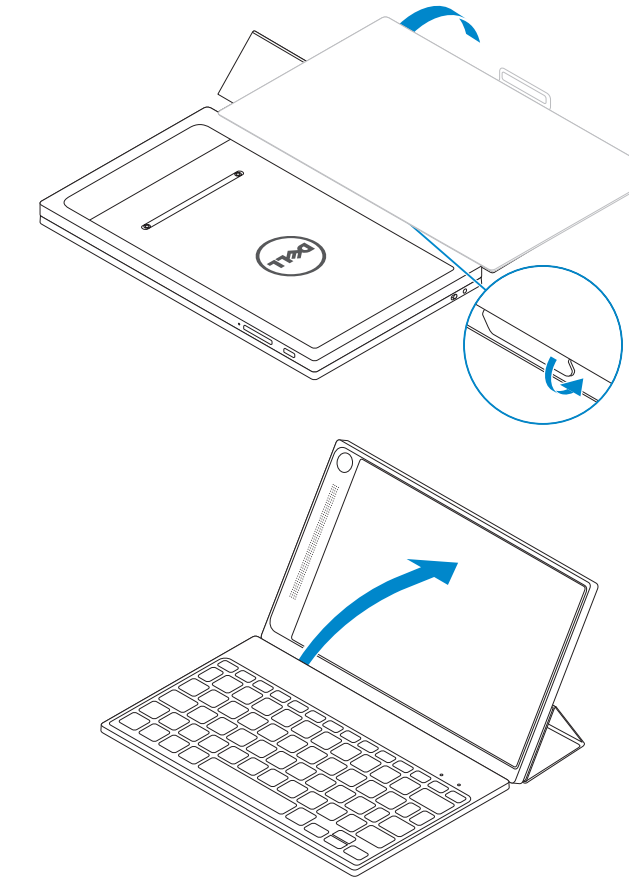
With the speaker on the left side, align the tablet base with the bottom of the tablet case and snap the tablet in place.

Le haut-parleur étant à gauche, alignez la base de la tablette avec la partie inférieure de l'étui de la tablette et enclenchez-la.



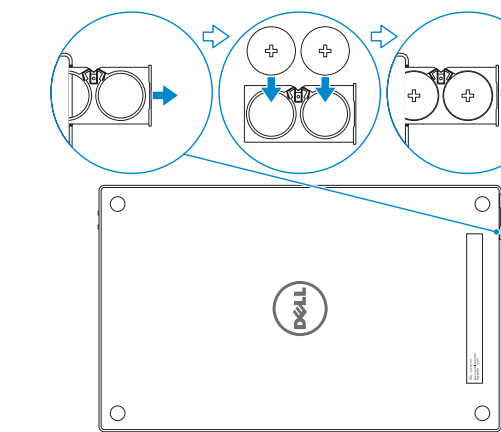
### Setting up your tablet in stand mode

Configuration de la tablette en mode Chevalet



### Replacing the batteries

Remplacement des batteries



**NOTE:** The batteries are installed when you receive the keyboard.

**REMARQUE :** les batteries sont installées lorsque vous recevez le clavier.

Product support and manuals  
Support produits et manuels

Contact Dell  
Contacter Dell

Regulatory and safety  
Réglementations et sécurité

Regulatory model  
Modèle réglementaire

[dell.com/support](http://dell.com/support)  
[dell.com/support/manuals](http://dell.com/support/manuals)

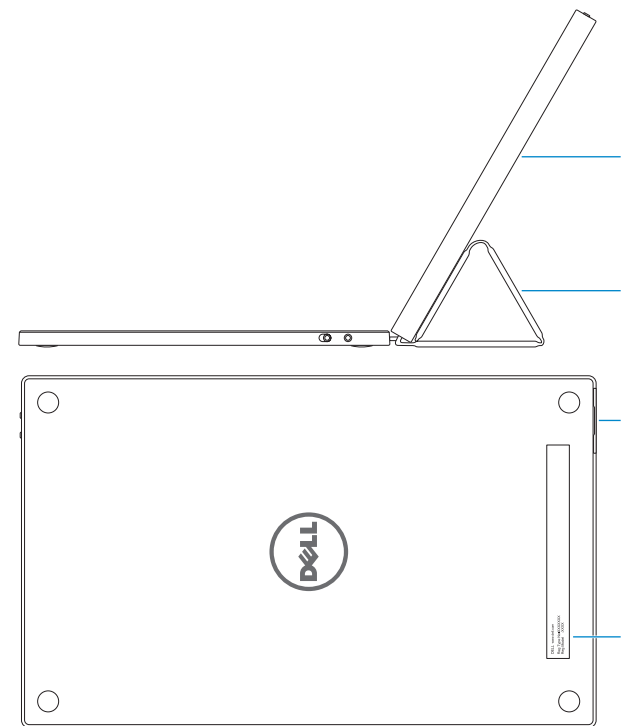
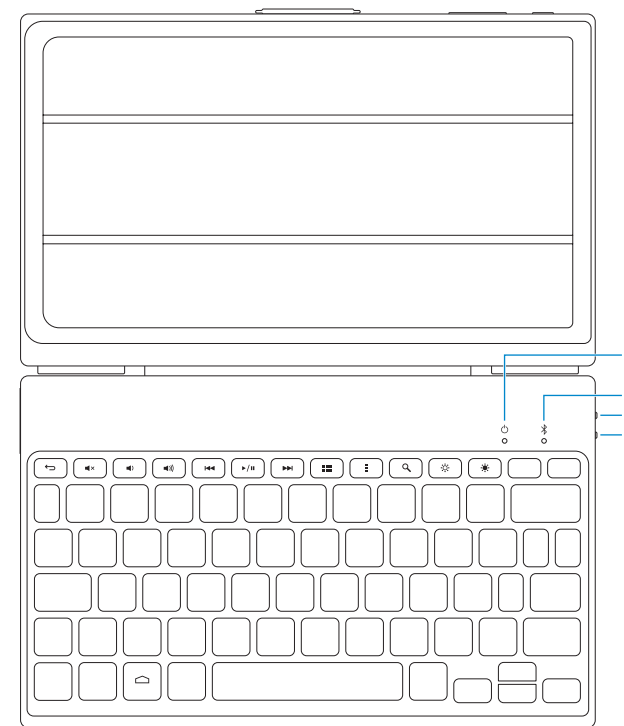
[dell.com/contactdell](http://dell.com/contactdell)

[dell.com/regulatory\\_compliance](http://dell.com/regulatory_compliance)

**KW14M01**

## Features

Caractéristiques

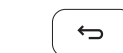













1. Power-status light
2. Bluetooth-status light
3. Bluetooth button
4. Power switch
5. Tablet case
6. Tablet stand/Flip cover
7. Battery tray
8. Regulatory label

1. Voyant d'état de l'alimentation
2. Voyant d'état de Bluetooth
3. Bouton Bluetooth
4. Bouton d'alimentation
5. Étui de la tablette
6. Support de la tablette/Couvercle rabattable
7. Support de la batterie
8. Étiquette de conformité aux normes

## Shortcut keys

Touches de fonction

-  Back  
Retour
-  Mute audio  
Couper le son
-  Decrease volume  
Diminuer le volume
-  Increase volume  
Augmenter le volume
-  Play previous track or chapter  
Lire le morceau ou le chapitre précédent
-  Play/Pause  
Lire/Pause
-  Play next track or chapter  
Lire le morceau ou le chapitre suivant

-  All apps  
Toutes les applications
-  Action menu  
Menu d'action
-  Search  
Rechercher
-  Decrease brightness  
Diminuer la luminosité
-  Increase brightness  
Augmenter la luminosité

